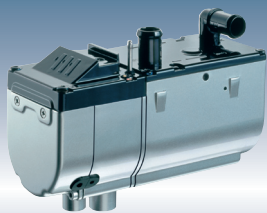


La gamme complète des chauffages à eau Eberspächer

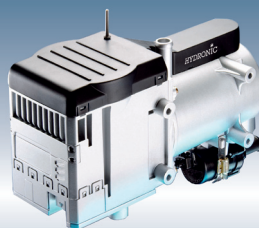
The complete range of the Eberspächer water heaters



HYDRONIC 5



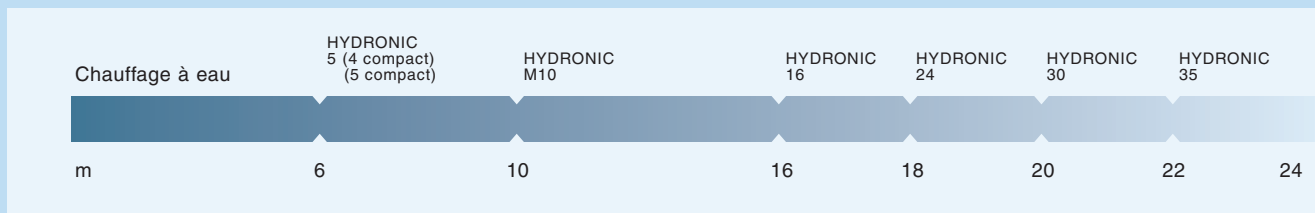
HYDRONIC 4 compact
HYDRONIC 5 compact



HYDRONIC M8/M10/M12



HYDRONIC 16/24/30/35



Caractéristiques techniques des chauffages à eau :

Chauffage à eau	Puissance calorifique (W)	Tension de service (V)	Consommation électrique (W)	Consommation de carburant diesel (l/h)	Encombrement Lxlxh (mm)	Poids (kg)
HYDRONIC 5	5,000/2,400	12/24	50/23	0,62/0,27	220x85x98	2,3
HYDRONIC 4 comp. HYDRONIC 5 comp.	5,000/2,400	12	50/23	0,62/0,27	220x86x160	2,9
HYDRONIC M8*	8,000/5,000 3,500/1,500	12/24	55/46 39/35	0,90/0,65 0,40/0,18	331x138x174	6,2
HYDRONIC M10	9,500/8,000 3,500/1,500	12/24	86/60 39/35	1,20/0,90 0,40/0,18	331x138x174	6,2
HYDRONIC M12	12,000/9,500/5,000 3,500/1,500/1,200	12/24	132/86/46 39/35/34	1,50/1,20/0,65 0,40/0,18/0,15	331x138x174	6,2
HYDRONIC 16	16,000	24	170	2,0	600x230x220	18
HYDRONIC 24	24,000	24	190	2,9	600x230x220	18
HYDRONIC 30	30,000	24	215	3,65	600x230x220	18
HYDRONIC 35	35,000	24	230	4,0	600x230x220	18



www.eberspacher.fr

Eberspächer SAS
3, rue Blaise Pascal - ZAC La Clé St Pierre
78996 Elancourt cedex - France
Tél : 33 (0)1 30 68 54 54
Fax : 33 (0)1 30 68 54 55
E-mail : info.esas@eberspacher.com

